

# Custom Log Cabin Prices



**2022**

Revised 03/25/2022



Phone: (330) 482-0078  
Email: info@waysidelawnstructures.com  
Website: www.waysidelawnstructures.com  
Location: 1112 State Route 14  
Columbiana, OH 44408

All Prices Subject to Change.



## Need a Cabin Quote?



### Sunrise - Cabin & Pavilion Colors -2021

#### Lifeline Ultra-2 Colors



Butternut #854    Dark Natural #830    Sequoia #835    Hazelnut #870    Cedar #885    Natural #880    Bronze #874    Chestnut #868



Walnut #865    Driftwood #861    Stone Gray #863    Beachwood #848    Classic Brown #878    Pickled White #850

#### Please Include:

Name: \_\_\_\_\_

Phone Number: \_\_\_\_\_

Email: \_\_\_\_\_

Zip Code of Delivery Destination: \_\_\_\_\_

#### 1. Style of Cabin or Playhouse:

Hunter, Hunter Lodge, Hunter Connector, Other: \_\_\_\_\_

2. Size of Structure Needed \_\_\_\_\_, Connector Size \_\_\_\_\_,

3. Pre-Built (i.e. Hunter 10'x14' - 12'x36') \_\_\_\_\_

#### 4. Entry Door:

Wooden \_\_\_\_\_, Wooden with Window \_\_\_\_\_, Half Glass Steel \_\_\_\_\_,

Size: 32" \_\_\_\_\_, 36" \_\_\_\_\_, Screen Door \_\_\_\_\_,

#### 5. Windows:

Type: Single Pane Single Hung \_\_\_\_\_, Thermopane Double Hung \_\_\_\_\_

Size: 24"x30" \_\_\_\_\_, 30"x30" \_\_\_\_\_, 24"x36" \_\_\_\_\_, 30"x36" \_\_\_\_\_,

6. Roof Insulation Package: 1" \_\_\_\_\_, 2" \_\_\_\_\_, or 3" \_\_\_\_\_,

7. Floor Insulation Package: 1" \_\_\_\_\_, or 1 1/2" \_\_\_\_\_,

8. Porch: Gable End \_\_\_\_\_, Hinged Porch on Long Side \_\_\_\_\_,

Pioneer Porch \_\_\_\_\_, Railing Type: Machined \_\_\_\_\_, Square Cut \_\_\_\_\_,

#### 9. Electrical:

Outlets \_\_\_\_\_, Switches \_\_\_\_\_, Rough Terminations \_\_\_\_\_,

Ceiling Fan Brackets (No Ceiling Fan) \_\_\_\_\_, 200 Amp Breaker \_\_\_\_\_,

Tankless Water Heater - Eco 27 (3 Gallons Per Minute) \_\_\_\_\_,

#### 10. Plumbing (*Portable Cabins Only*)

32" Shower with Shower Head \_\_\_\_\_, 36" Shower with Shower Head \_\_\_\_\_,

Toilet: Regular \_\_\_\_\_, Elevated \_\_\_\_\_, Nature's Head Compost \_\_\_\_\_,

Vanity with Sink \_\_\_\_\_,

11. Interior Walls \_\_\_\_\_; Interior Doors \_\_\_\_\_;

12. Interior Clearcoat: Gloss Clear Coat \_\_\_\_\_, Danish Oil \_\_\_\_\_,

13. Please include Additional Options, Layouts, Delivery Zip Codes, Etc...

#### Checklist:

1. Local Zoning/Building Laws

2. Access to Property

3. Customer will be responsible for Building Permits.

4. Customer will need to provide Stamped Drawings if necessary.

5. Type of Foundation/Base

# HEXAGON SWING STAND

6x6 Posts & Beams • 4x6 Braces • 10 Swing Hangers • Smooth – Non Hewn •

Treated Pine Kit  
(Non Hewn)

**\$2,735**

Cedar Kit  
(Non Hewn)

**\$5,111**

Delivery & Installation within 20 Miles Add 15%  
Does Not Include Ground Preparation • Swings • Stain

Machine Hewn ~ Add \$264 Hand Hewn ~ Add \$429



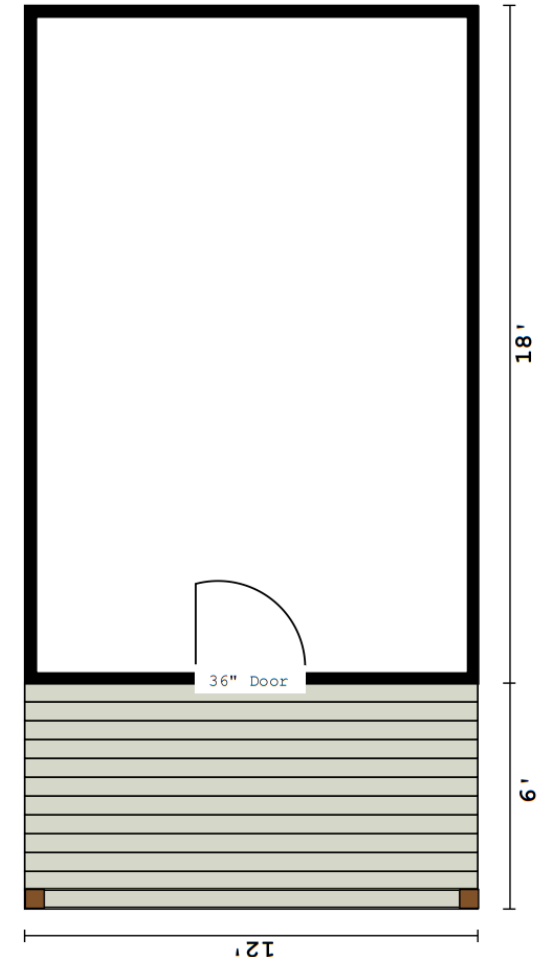
## Custom Portable Hunter Cabins



### Hunter Standard Features:

- 5/12 Pitch Roof
- Loft above Optional Porch
- 30-yr Shingles or Steel Roof
- 16 Rows Solid Square Cut or “D” Shaped 4x6 Logs
- Stained w/ Perma Chink Exterior Stain
- 2" White Pine T & G Floor
- 36" Wood Door or Half Glass Steel Door
- Pine Interior Trim, Rafters, & Beams

Hunter					
	5/12 P	Hing. Porch		12/12 P*	Hing. Porch
10x14	\$9,905	\$12,800	Portable Hunter Cabin with 12/12 Pitch Roof (Roof Completed onsite)	\$17,628	\$21,764
10x16	\$10,741	\$14,052		\$18,618	\$23,347
10x18	\$11,652	\$15,377		\$19,683	\$25,004
10x20	\$12,551	\$16,691		\$20,737	\$26,651
10x22	\$13,719	\$18,271		\$22,059	\$28,562
10x24	\$14,760	\$19,725		\$23,255	\$30,347
10x26	\$15,807	\$21,186		\$24,455	\$32,140
10x28	\$16,848	\$22,642		\$25,651	\$33,928
10x30	\$17,939	\$24,146		\$26,896	\$35,763
10x32	\$19,023	\$25,644		\$28,135	\$37,593
12x16	\$13,037	\$16,348		\$20,547	\$25,276
12x18	\$14,285	\$18,010		\$21,980	\$27,302
12x20	\$15,581	\$19,721		\$23,461	\$29,375
12x22	\$16,904	\$21,456		\$24,969	\$31,472
12x24	\$18,173	\$23,138		\$26,424	\$33,516
12x26	\$19,422	\$24,801		\$27,857	\$35,542
12x28	\$20,733	\$26,527		\$29,354	\$37,631
12x30	\$22,277	\$28,485		\$31,083	\$39,951
12x32	\$23,374	\$29,995		\$32,365	\$41,823
12x34	\$24,694	\$31,727	\$33,870	\$43,917	
12x36	\$26,013	\$33,459	\$35,374	\$46,012	



Model #: HS12246P\_120821

There will be a \$75 charge per change incident after order

\* 12/12 Pitch Roof – Select Locations Only

## Portable Hunter Log Cabin Options

Windows		Loft Options	
Single Pane (Brown or White – Single Hung)	\$213	Additional Loft – Per Sq. Ft.	\$7.71
Upgrade to Tempered Glass	\$291	Add Ladder	\$131
Thermopane (White or Clay – Double Hung)	\$501	Electrical Options	
Thermopane Window (Size 36"x48")	\$593	Receptacle/Switch Termination with Wooden Cover	\$97
Wood Shutters for Windows – Ea.	\$171	Receptacle/Switch Termination with Plastic Cover	\$79
2'x4' Skylight	\$957	Light Fixture Termination (No Light Fixture)	\$36
Trapezoid Thermopane Windows – Ea.	\$856	Light Fixture Bracket (No Light Fixture)	\$77
Doors		200 AMP Breaker Panel (20 Space w/5 Breakers)	\$421
Extra Exterior Door (Wood or Half Glass Primed Steel)	\$733	125 AMP Breaker Panel (20 Space w/5 Breakers)	\$329
Painted Vs. Primed Steel	\$216	Breaker Panel Cabinet	\$151
Deadbolt	\$104	Range Wire with Plug – Per Ft.	\$7.71
Pine Screen Door	\$363	Complete Exterior GFI Outlet with Wood Plate	\$137
Sliding Patio Door	\$1,521	Complete Interior GFI Outlet with Wood Plate	\$124
French Door	\$2,301	Ceiling Fan/Light Combo – ea.	\$326
Awning Over Exterior Door	\$386	Exhaust Fan/Light Combo – ea.	\$280
Pine Interior Door – Hinged	\$270	Porch Light – Ea.	\$146
Rolling Interior Barn Door	\$693	Plumbing Options	
Pocket Interior Door	\$693	Plumbing Package (Includes 32" Shower with Head, Shower Door, Eco Smart 27 Water Heater, Toilet, 2' Vanity with Faucet, & Plumbing)	\$5,233
Bi-Fold Closet Door	\$714	Shower (Size: 36"x36") No Plumbing	\$1,366
Insulation Package		Shower (Size: 36"x60") No Plumbing	\$1,679
1" in Floor ~ Per Sq. Ft.	\$3.09	Full Size Tub	\$1,510
1 1/2" in Floor ~ Per Sq. Ft.	\$4.63	36" Shower Door	\$796
1" in Roof 5/12 Pitch ~ Per Sq. Ft.	\$3.09	Cold Waterline Hookup	\$70
1" in Roof 12/12 Pitch ~ Per Sq. Ft.	\$4.63	Faucet, Hot/Cold Waterline	\$620
3" in Roof 12/12 Pitch ~ Per Sq. Ft.	\$10.80	Sink, Trap, & Drain Stubbed through Floor	\$316
Porch Options		Standard Toilet	\$501
Screened in Porch – Per Sq. Ft.	\$19	Elevated Toilet	\$517
Cottage Style (5'x10' or 5'x8' Porch)	\$781	Nature's Head Composting Toilet	\$1,796
Pre-Cut Porch Floor Material – per Sq. Ft.	\$11.43	Water Heater (10 or 20 Gallon with Water Hookup)	\$980
No Porch – No Charge (All Lofts Additional)		On Demand Water Heater – Eco Smart 27	\$1,080
6'x10' Open Porch (No Railing) – Add Connector Fee	\$2,867	Stainless Steel Sink (Twin or Single) With Plumbing	\$783
8'x10' Open Porch (No Railing) – Add Connector Fee	\$3,104	22"x25" Vanity with Faucet & Plumbing	\$1,161
10'x10' Open Porch (No Railing) – Add Connector Fee	\$3,346	22"x37" Vanity with Faucet & Plumbing	\$1,363
Railing (Pine – Square Cut or Round) – Per Lin. Ft.	\$56	22"x49" Vanity with Faucet & Plumbing	\$1,639
Railing (Cedar – Square Cut or Round) Per Lin. Ft.	\$59	Laundry Washer Box Option	\$860
Bedroom Options		Frost Proof Exterior Faucet	\$101
Built in Bunks with Closet (Full Over Queen)	\$1,127	Bronze Colored Faucet – Upgrade ea.	\$69
Bunk Per Platform	\$250	Kitchen Sink Faucet – Chrome	\$306
Large Drawers (For Under Bunks) – Per Drawer	\$176	Bronze Colored Faucet – Upgrade ea.	\$373
Free Standing Queen Bed (with Headboard)	\$507		
Free Standing Twin Bunks	\$647		

## Custom Playhouse Log Cabins



Bachelor		
	6x10	\$4,673
	6x12	\$4,947
	8x12	\$5,794
12 Rows	8x14	\$6,668
66"	10x12	\$6,899
	10x14	\$7,686
	10x16	\$8,680



Cottage (3x5 Porch)		
	10x12	\$7,231
14 Rows	10x14	\$8,004
77"	10x16	\$9,039
	10x18	\$9,926



Trapper		
	6x8	\$4,659
12 Rows	8x8	\$5,040
66"	8x10	\$5,628
	8x12	\$6,248



Pioneer		
	10x8	\$5,930
	12x8	\$6,149
	12x10	\$6,675
11 Rows	14x10	\$7,535
60.5"	16x10	\$8,400
	12x12	\$8,111
	12x14	\$9,062
	12x16	\$9,954
	12x18	\$12,677
14 Rows	12x20	\$13,619
77"	12x22	\$14,688
	12x24	\$16,019



There will be a \$75 charge per change incident after order

Playhouse Options	
Built on Site – Not Available 2022	
Cedar Logs – Add 42%	
Dormers on Pioneer, Bachelor, & Trapper – ea.	\$479
Double Door – ea.	\$397
Single Pane Single Hung Window – ea.	\$213
Interior Gloss Clear Coat – per Sq. Ft.	\$3.09
No Stain deduct 6%	
Receptacle Termination with Cedar Cover – ea.	\$97
Switch Termination with Cedar Cover – ea.	\$97
Termination – No Light Fixture/Switch/Receptacle – ea.	\$36
Round Rail – per Section	\$140
Square Rail – per Section	\$100
Taller Cabins – per Lin. Ft.	\$7.71

# Custom Misc. Log Cabins



### Standard Features:

- Double Wooden Plexiglass Door
- 39" x 53" Windows
- Hip or Gable Roof Style • 30 Year Shingles
- 16 Rows Logs • Exterior Stained
- 1" Sheathing • 2" White Pine T & G Floor

Camper	
10x14	\$9,392
10x16	\$10,276
10x18	\$11,222
10x20	\$12,193
10x22	\$13,430
10x24	\$14,535
10x26	\$15,638
12x16	\$12,671
12x18	\$13,993
12x20	\$15,362
12x22	\$16,763
12x24	\$18,108
12x26	\$19,427
12x28	\$20,817
12x30	\$22,450
12x32	\$23,613



### Standard Features:

- Single Wooden Door
- Square Cut or "D" Shaped Logs
- Gable Roof Style
- 30 Year Shingles or Steel
- Exterior Stained
- 1" Pine Roof Sheathing
- 2" White Pine T & G Floor

Storage Buildings		
15 Rows	4x4	\$2,979
	6x6	\$3,864
	6x8	\$4,938
	6x10	\$6,012
	8x8	\$5,656
	8x10	\$6,909
16 Rows	8x12	\$8,162
	10x10	\$7,075
	10x12	\$8,490
	10x14	\$9,905
	10x16	\$10,741
	12x12	\$9,778
	12x14	\$11,408
	12x16	\$13,037
12x18	\$14,285	
12x20	\$15,581	
12x22	\$16,904	
12x24	\$18,173	



### Standard Features:

- Exterior and Interior Stained
- Hip and Gable Roof Style
- Removable Screen Panels
- 1" Roof Sheathing • 16 Rows Logs • 2" Treated Floor Non T&G
- Wooden Screen Door
- 30 Year Shingles

Breezewood	
10x12	\$7,442
10x14	\$8,146
10x16	\$9,087
10x18	\$9,766
10x20	\$10,704
10x22	\$11,867
10x24	\$12,887
12x14	\$9,812
12x16	\$11,039
12x18	\$12,316
12x20	\$13,501
12x22	\$14,722
12x24	\$16,019

Storage Building Options	
10' Reverse Gable	\$1,187
12' Reverse Gable	\$1,187
Cedar Trim per Window	\$36
Double Door	\$397
4 Lite Door Window	\$187
6 Lite Door Window	\$254
10' W Hip Roof	\$829
12' W Hip Roof	\$1,029

Outhouses	
4x4	\$2,979
6x6	\$3,864
14 Rows	



**Option:** • Steel Roof vs Shingles: \$4.67 per sq. ft.

There will be a \$75 charge per change incident after order

## Portable Hunter Log Cabin Options – Contin...

Shelves, Cabinets, Etc...	
30" Corner Shelf	\$23
12" Wide Wall Shelf – per Ft.	\$21
Peg Coat Hanger – Per Peg	\$11
Secret Compartment (in Bunk)	\$250
Cedar Toy Chest – 20"x30"	\$253
Linen Pantry Cabinet 12" W x 24" D x 80" H – per Ft.	\$201
Coffee Table – 20"x40"	\$306
Corner Cabinet – 24"x30"	\$146
Upper Cabinet with Door – Per LF	\$86
Base Cabinet (Formica) with Door – per LF	\$136
Base Cabinet (Maple Top) with Door – per LF	\$149
Base Cabinet (Butcher Block Top) with Door – per LF	\$172
"L" Shaped Counter Top – per "L"	\$391
Drawers – per Drawer	\$66
Medicine Cabinet with Mirror – 20"x24"	\$190
Lazy Suzans – ea.	\$79
Table with Maple Top – 30"x40"	\$520
Highback Chairs – ea.	\$336
Bar Stools – 20" - ea.	\$200
Table Set #1 (Includes 30"x40" Table with 4 Highback Chairs)	\$1,863
Misc Options	
Interior Walls ~ per Linear Foot	\$60
Double Walled Stove Pipe	\$1,057
Opening for Customer installed Window	\$93
Enclose Interior Wall to Peak – Per Ft.	\$10
6x6 Logs for Portable Hunter – Per Sq. Ft.	\$39
Additional Row of Logs – Per Lin. Ft.	\$7.71
40" Exterior Porch Bench	\$253
Cedar Logs Vs. Pine (x Base Price)	42%
Connector Cabin Adapter Gable	\$2,286
8' Shed Style Dormer – Per Side	\$3,810
Built on Site (Plus Delivery) – Not Available 2022	
Treated Floor Vs. Standard White Pine – Per Sq. Ft.	\$2.31
Textured Steel Roof or Copper Vs. Standard – per S	\$1.54

Accents		
Interior Gloss Clear Coat – Per Sq. Ft.		\$3.09
Stain & Clear Coat Floor		\$2.31
Live Edge Trim ~ Per Unit, Inside		\$57
Pine Burnt Beams, Rafters, & Trim – per Sq. Ft.		\$1.93
Pine Stained Beams, Rafters, & Trim – Per Sq. Ft.		\$1.93
Timber Frame Gable – No Transoms		\$280
Timber Frame Gable – Plexiglass Transoms		\$800
Timber Frame Gable – Thermopane Transoms		\$2,240
Wooden Receptacle or Switch Plates – Ea.		\$11.43
Square Cut Logs Vs. Rounded (Same Price)		
Hand Hewn Logs – Per Sq. Ft.		\$10.00
Square Cut "Brushed" Look – Per Sq. Ft.		\$1.57
Cedar Floor Overlay – Per Sq. Ft.		\$7.14
Linoleum Floor Overlay – Per Sq. Ft.		\$4.29
Stains for the Customer		
Perma-Chink Exterior Stain – per Gallon		\$136.00
Perma-Chink Exterior Clear Coat – per Gallon		\$125.00
Interior Clear Coat – per Gallon		\$76.00



