

BUILD + INSTALL INSPIRE

— SHEDS BY JDM STRUCTURES —

2022 - 2023

WORK SPACES
Build a home office,
workshop, garage

RUSTIC LIVING
Create your sweet
spot miles away

VIRTUAL BUILDERS
Get your designer
kicks online





BUILD + INSTALL INSPIRE

OUR PURPOSE *is to reflect the Hand of God* in the quality and integrity of our work, to be His steward in our use of the Earth's resources, and to witness for Him in the fairness, honesty and humility of our daily interactions with others.

OUR VISION *is to use new, efficient, green building methods* and materials to provide well-designed, well-constructed accessory buildings, homes and commercial buildings that solve problems for people and improve their living conditions.

OUR MISSION *is to treat everyone with respect,* never bragging or exaggerating, helping buyers make the best choice for their family or business, being fair and honest in every transaction, delivering on time, and exceeding expectations whenever possible.

OUR PLEDGE TO YOU

You will never be treated unfairly or unkindly here.

TAILORED WITH PURPOSE

Styled by an Ohio based interior designer, this shed was crafted with a keen eye for detail. From the tiled flooring and painted walls to the abundance of natural light, with a space like this, you can work, play and even entertain!



COVER AND ABOVE: ELLIOT, 12'x14'. Special touches: Smartlap siding and trim in Chestnut, Bronze steel roof, 54" double Pushbar doors, awning and 28"x29" wood windows in Black Fox.

BUILD + INSTALL + INSPIRE

CONTENTS



7 WORK FROM HOME IN STYLE

10 FARMHOUSE STORAGE WITH MODERN STYLING

12 LIFE AT YOUR PACE

15 LOFTY ASPIRATIONS

18 LIVE WHERE THE LAND PROVIDES

19 GREEN THUMBS WELCOME!

21 HAPPINESS BLOOMS

22 FINDING GRACE

24 DRIFTWOOD IS HERE TO STAY

27 THAT EASY OUTDOOR FEEL

29 SOMETHING BRILLIANT AWAITS

30 INSPIRED BACKYARD IDEAS

32 MAKE A SPLASH

35 REMOTE AND RUSTIC

36 MORE THAN A SHED

39 A SHED FOR ANY BACKYARD

40 RUSTIC NEVER LOOKED SO GOOD

42 WARMTH. PERSONALITY. STORAGE.

44 NOTHING BEATS THE CLASSICS

46 IMAGINATION COMES TO LIFE

48 A SMART BUDGET CHOICE

51 A SHED FOR EVERY BUDGET

53 LIFE IN THE SADDLE

54 STORAGE IN STYLE

57 ESCAPE TO A PERFECT GARAGE

59 GARAGES SOLVE SPACE PROBLEMS

61 FLEXIBILITY COMES HOME

62 THEY'RE ONLY YOUNG ONCE

63 ADVENTURE AWAITS

64 SOLAR. IT'S TIME.

65 LIVE MORE, WORRY LESS

66 TINY HOMES, BIG IDEAS

68 COMPLETE BUYER'S GUIDE

71 CATSKILL. WORKHORSE CONSTRUCTION



KLEIDON PUBLISHING

Volume 6, Number 1
Litsheds0122

Rose Kleidon, Editor
Tim Klinger, Creative Director
www.kleidon.com

©2022 JDM Structures, LTD. All rights reserved.
Reproduction without permission is prohibited.





WORK FROM HOME IN STYLE

We're totally in love with this Viva Violet home office.

With its bold color and finished interior, it's definitely More than a Shed™. Author S.G. Savage needed room to continue work on her books. "I wanted a place," says the author, "with nothing but my favorite things."

The results are both show-stopping and functional, providing office space and privacy.



HARTFORD, 10'x10'. Special touches: 7/12 roof pitch, SmartSide in Viva Violet with Soft White trim and Weathered Wood shingles. Radiant barrier roof sheathing, 72" fiberglass double entry doors and 30"x36" aluminum windows. A custom interior features wallboard, pine-paneled ceiling, electrical wiring and a vented heating/cooling unit. See more pictures online.

7 SMART REASONS TO BUY HERE

Settle for an ordinary shed? Never! No need to, whatever your budget. Our sheds look great, increase property value and give you space for storage, workshops and entertaining. Every time you use it, every time you look at it, you'll be glad you bought here.



1 STRENGTH, TOP TO BOTTOM

- a. 6" fascia
- b. Premium clear studs, 16" on center
- c. SmartFloor strength, and you can double it!
- d. Joists installed on edge

2 GUARANTEED, TOP TO BOTTOM

- a. 30-year dimensional shingles
- b. Industry's top 5/20-year warranties

3 TREATED, ENGINEERED WOOD

- a. Authentic, renewable resource
- b. Made with less waste
- c. Treated walls, trim, floors & skids

4 LATEST TECHNOLOGY

- a. Panelization: straighter, tighter, stronger
- b. Baked-on finishes last longer

5 MORE SECURE

- a. 6' no-rust aluminum hinges
- b. Keyed locks

6 BETTER DESIGN

- a. Architectural lines, classic proportions
- b. A professional palette of paints & stains
- c. Many upgrades and options

7 FAST INSTALLATION

- a. Factory-built and installed in about an hour
- b. Built on your site quickly and cleanly

YOUR TOTAL SHED PACKAGE.

Roof

Keeps it cooler and brighter with LP® ProStruct® Roof Sheathing with SilverTech®

Walls

Gives a brighter, cleaner look with LP® SmartSide® Panel Siding with SmartFinish® Technology

Floor

Offers a tough, pro-grade finish with LP® ProStruct® Floor with SmartFinish®

Treated engineered wood materials from LP® Outdoor Building Solutions® feature innovations to deliver years of toughness and beauty.

Shed It Your Way.

See our full lineup at LPShed.com



Outdoor Building Solutions®

farmhouse storage with modern styling

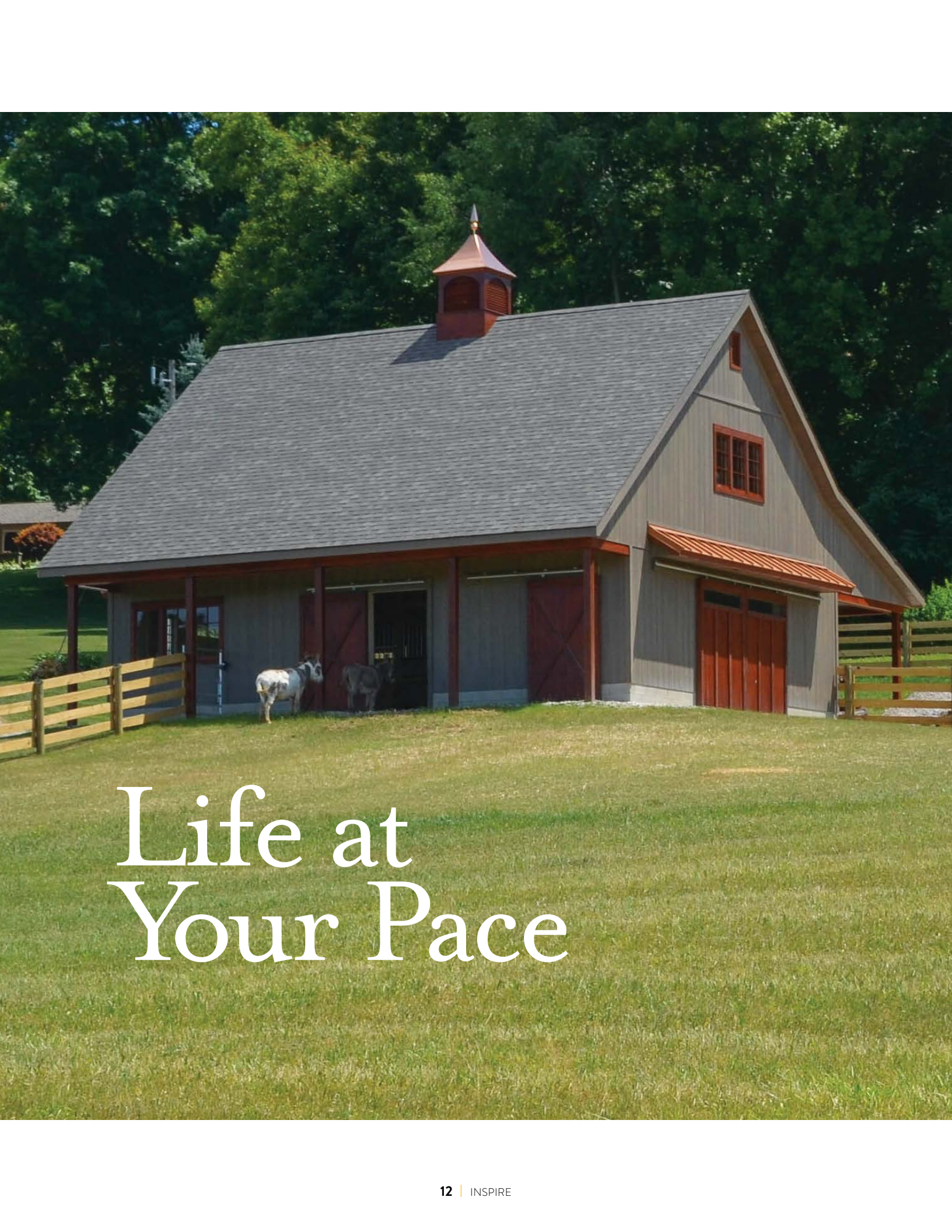
12 LIFE AT YOUR PACE

15 LOFTY ASPIRATIONS



FAIRVIEW, 27'x32'. Special touches: SmartSide siding and trim in Butternut, Brown shingles, custom finish on porch deck and posts, 30"x36" and 24"x36" aluminum windows, 15-light fiberglass door, hand-peeled cedar posts and cedar gable kingpost trim.





Life at Your Pace



Home to donkeys, ponies and chickens, this copper-touched barn is a favored after-school hangout for the family's two little girls, where they trade stuffed animals for real ones, and in the process, immerse themselves in farm life and learn the joys and responsibilities of caring for farm animals. Here, the noise of the world quiets out and life moves at your pace.



CUSTOMIZED LEXINGTON, 28'x36'. Rustic stained siding and copper on the pent roof, cupola and finial come together for true country glamour. This big, 28'x36' barn is complete with horse stalls, a workshop, and stairs to a full second floor. Resting on a concrete floor, it features comfortable overhangs shading both sides and doors hung from rails the old-fashioned way.





ONTARIO, 16'x28'. Special touches: SmartSide siding and trim in Butternut, Brown shingles, coppertop pent roof with arched timber braces, brown garage door, large wood vents and a large coppertop cupola with copper finial. Not shown: Crossbuck door, 8' loft.

LOFTY ASPIRATIONS

Get maximum storage the same way farmers always have — with a gambrel roof.

That balloon-shaped roof results in more usable loft space. Farmers need it for hay and straw, and it's a good idea anytime. Ontario comes in twenty-nine sizes with lofts that get bigger as the barn does.

ONTARIO, 12'X16'. Special touches: SmartSide in Riverway with Devon Cream trim and Weathered Wood shingles. Craftsman Stall doors, 30"x36" aluminum windows, Crossbar shutters and a large cupola.





live where the land provides

19 GREEN THUMBS WELCOME!

21 HAPPINESS BLOOMS

22 FINDING GRACE

25 DRIFTWOOD IS HERE TO STAY



SKYLINE, 20'x24'. Special touches: 8/12 roof pitch, SmartSide in Driftwood with Nature doors and window frames. Weathered Wood shingles, 8' walls, Crossbuck and Cottage Crossbuck doors with strap hinges, 28"x29" wood windows, pent roof with standing seam copper roofing and arched timber braces, corbels, extra-large coppertop cupola with copper finial. The picturesque farmhouse look updates brilliantly with just a touch of copper luxe.





GREEN THUMBS WELCOME!

This shed is outfitted for an enthusiastic gardener —
part tool shed, part potting shed,
part relaxing hideout. What does the owner think?
“What a super place for work and play!”



NEWPORT, 14'x18'. Special touches: 8/12 roof pitch, Smartside in Driftwood with Devon Cream trim, Weathered Wood shingles, arched timber braces, corbels, custom coppertop cupola, 33" and 66" Craftsman Crossbuck doors, awning over double door, four 28"x29" wood windows, two 60" flower boxes, lofts and workbenches.



GARDENER, 8'x10'. Special touches: SmartSide, Weathered Wood shingles, paint in Latte, Soft White and Pumpkin, Craftsman Braced door, 24"x36" aluminum window (not shown) and a small cupola.

HAPPINESS BLOOMS



A translucent roof lights up this potting shed every day of the year, while a workbench and plant shelf invite any seed to sprout. These features, along with the ridge vent, come standard. Gardening enthusiasts will also love the optional single-hung windows, shutters, and window boxes.

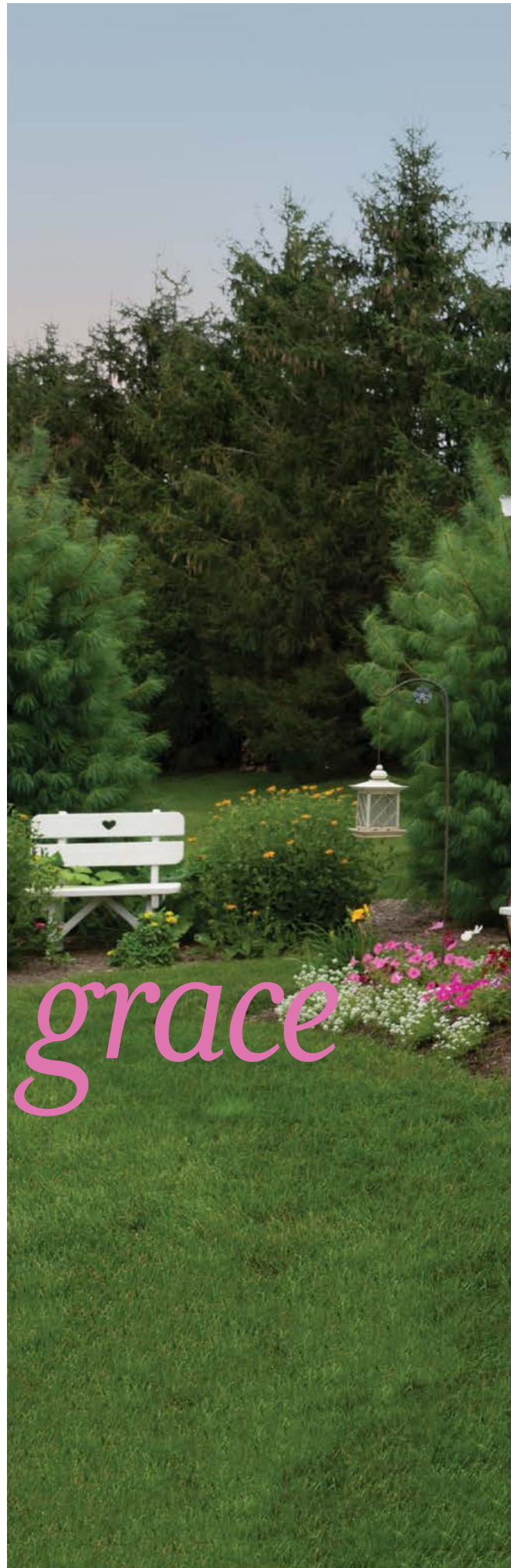


BROOKSIDE, 10'x16'. Special touches: Soft White with Nature on the porch post and deck. Craftsman Braced door, 28"x29" wood windows, Crossbar shutters, flower boxes, steel roof in Galvanized. Not shown: double doors for the mower and tiller, a potting bench under the windows.



finding *grace*

The Son Flower Shack is dedicated to the memory of the owner's son. It gives her a bright place to paint pots and sell plants, the proceeds of which she uses to support families in grief. "Helping people who have lost children is why I started," she reflects, "I've heard so many different stories, and each is touched with a bit of grace."





SKYLINE, 10'x12'. Special touches: 8/12 roof pitch, SmartSide with siding and trim in Soft White, custom shingles, 36" fiberglass door, eight 24"x36" aluminum windows, two 24" flower boxes, a large cupola, lofts and a workbench. Gutters by owner. Not shown: 66" Craftsman Pushbar doors.



SKYLINE, 12'x20'. Special touches: 8/12 roof pitch, SmartSide in Driftwood, trim and accents in Cedar stain, and Weathered Wood shingles. Pent roof with arched timber braces, 30"x36" aluminum windows, 66" Craftsman Pushbar doors with aluminum threshold, medium coppertop cupola with copper finial.



DRIFTWOOD IS HERE TO STAY

Driftwood is the new Gray Shed craze. Driftwood is a warm greige stain with always-been-here texture. It plays well with a pop of accent paint or stain and the monochromatic magic of Weathered Wood shingles or the industrial chic of a Galvanized steel roof. It's warm, understated and here to stay.

SKYLINE, 14'x16'. Special touches: 12/12 roof pitch, SmartLap siding and trim in Driftwood, Cedar stain on door, Black shingles, 24"x24" aluminum window, 66" Cottage Braced doors, one set of two plant shelves, custom gutters.





SKYLINE, 10'x16'. Special touches: Custom siding with Driftwood stain, Weathered Wood shingles, 72" fiberglass doors painted by customer in Cherry, 28"x29" wood windows, flower boxes, corbels, radiant heat barrier roof sheathing, workbench and 2' loft.
Not showing: 24"x24" aluminum windows across the back wall.



that easy outdoor feel

29 SOMETHING BRILLIANT AWAITS

30 INSPIRED BACKYARD IDEAS

32 MAKE A SPLASH



Renowned chef Kathy Lehr uses her Skyline as a classroom for students and an outdoor entertaining center. Linens, settings and serving pieces are stored within easy reach and in the winter, tables and chairs are tucked inside. To inquire about cooking classes or buy a bread-baking video, contact Kathy at taoofdough@neo.rr.com.



SOMETHING BRILLIANT AWAITS

Sometimes a shed is just what your backyard is missing. Here's one that shows how transformational this easy upgrade can be. Got stuff to store? Nothing's more practical than a shed for de-cluttering, but whatever you put inside, a bit of bold paint makes you look nothing short of brilliant.



SOMERSET, 10'x14'. Special touches: SmartSide in Driftwood with Grass and Black Fox accents, Bronze steel roof, Craftsman Stall doors, 28"x29" wood windows, crossbar shutters.

INSPIRED BACKYARD IDEAS



LEXINGTON, 14'x16'. Special touches: SmartSide siding in Willow with Soft White trim and Nature accents, steel roof in Galvanized, 33" and 66" doors, 28"x29" wood windows, awning over windows and one set of two exterior plant shelves.



Go extraordinary with a five-sided shed or a full-porch shed. Either says, "Yes!" to your backyard, whether you use it as a zen-like painting studio, line it with your top-of-the-line bow-hunting equipment or fill it with items you'd rather not list.



MARCO, 12'x12': Special touches: five-sided footprint. Custom overhang, custom slate shingles, Driftwood stain on SmartLap siding, double full-light cedar doors, 20"x60" windows and awning.



MAKE A SPLASH

Being a family is awesome. Celebrate it with a summer's worth of splashing and a pool house with full family and guest accommodations. If you've got a big idea, ask us about our architectural design services. This custom design began with a Lexington, but, baby, how it's grown!



EXTRA-CUSTOM LEXINGTON, 20'x48'. Special touches: stone and stucco siding, roof pitch increased for a cathedral ceiling and loft for guest suites/changing rooms. On the first floor, you'll find a full-service kitchen and a game room.





NEWPORT, 14'x16' Special touches: 8/12 roof pitch, arched timber braces, SmartLap siding in Barn Red with Nature accents, Weathered Wood shingles, Cottage Basic doors, 28"x29" wood windows, corbels, large wood vents, awning and custom coppertop cupola.

remote and rustic

36 MORE THAN A SHED

39 A SHED FOR ANY BACKYARD

40 RUSTIC NEVER LOOKED SO GOOD

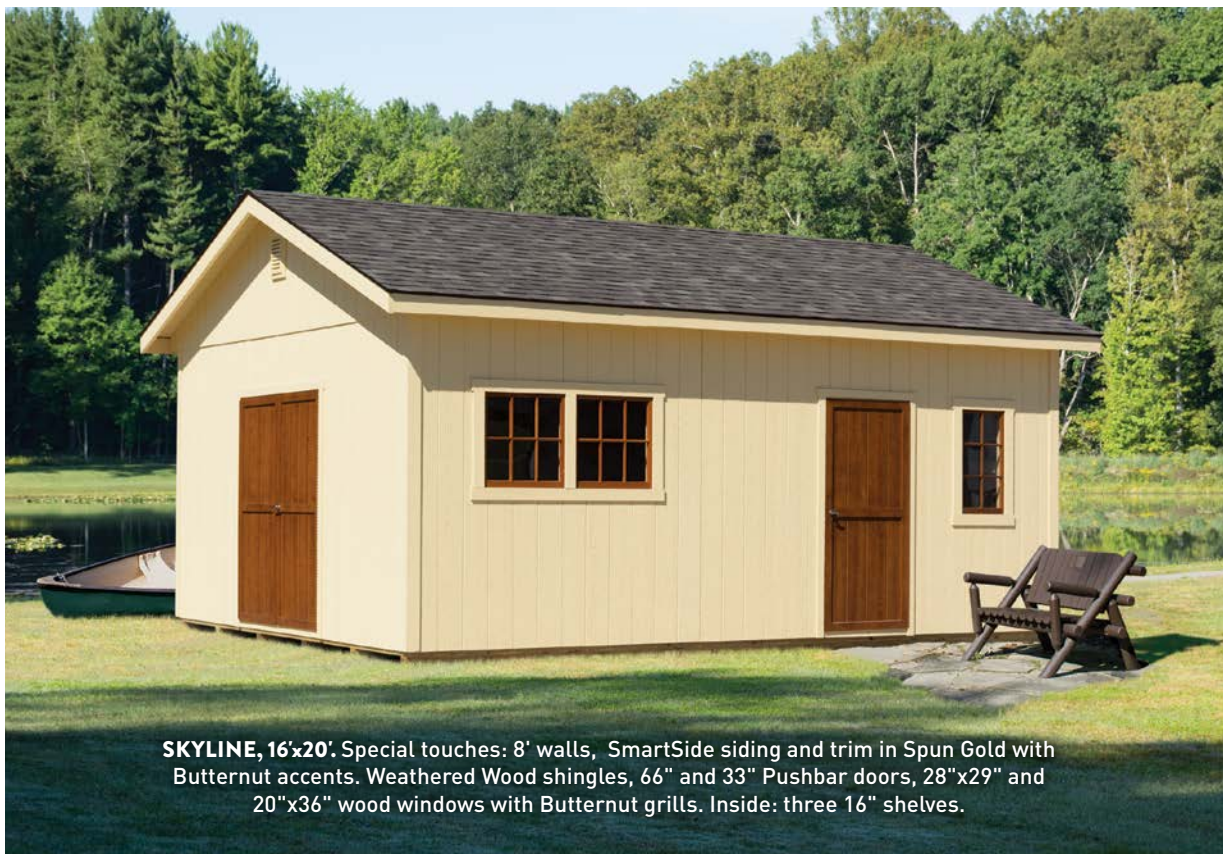


MORE THAN A SHED

Riverside, lakeside or patio-side, wherever your backyard resides, it can do more with a shed for entertaining, putting that kayak or canoe to bed, or becoming a fireside-and-s'mores destination. Give yourself a chance to break away and focus on the important things like having coffee on the patio, rowing a boat or watching the sunset.



HORIZON, 10'x16'. Special touches: trim and custom siding in Cedar. Brown shingles, hand-peeled cedar posts, 28"x29" wood windows, Craftsman Stall door, flower boxes and large wood vents.



SKYLINE, 16'x20'. Special touches: 8' walls, SmartSide siding and trim in Spun Gold with Butternut accents. Weathered Wood shingles, 66" and 33" Pushbar doors, 28"x29" and 20"x36" wood windows with Butternut grills. Inside: three 16" shelves.

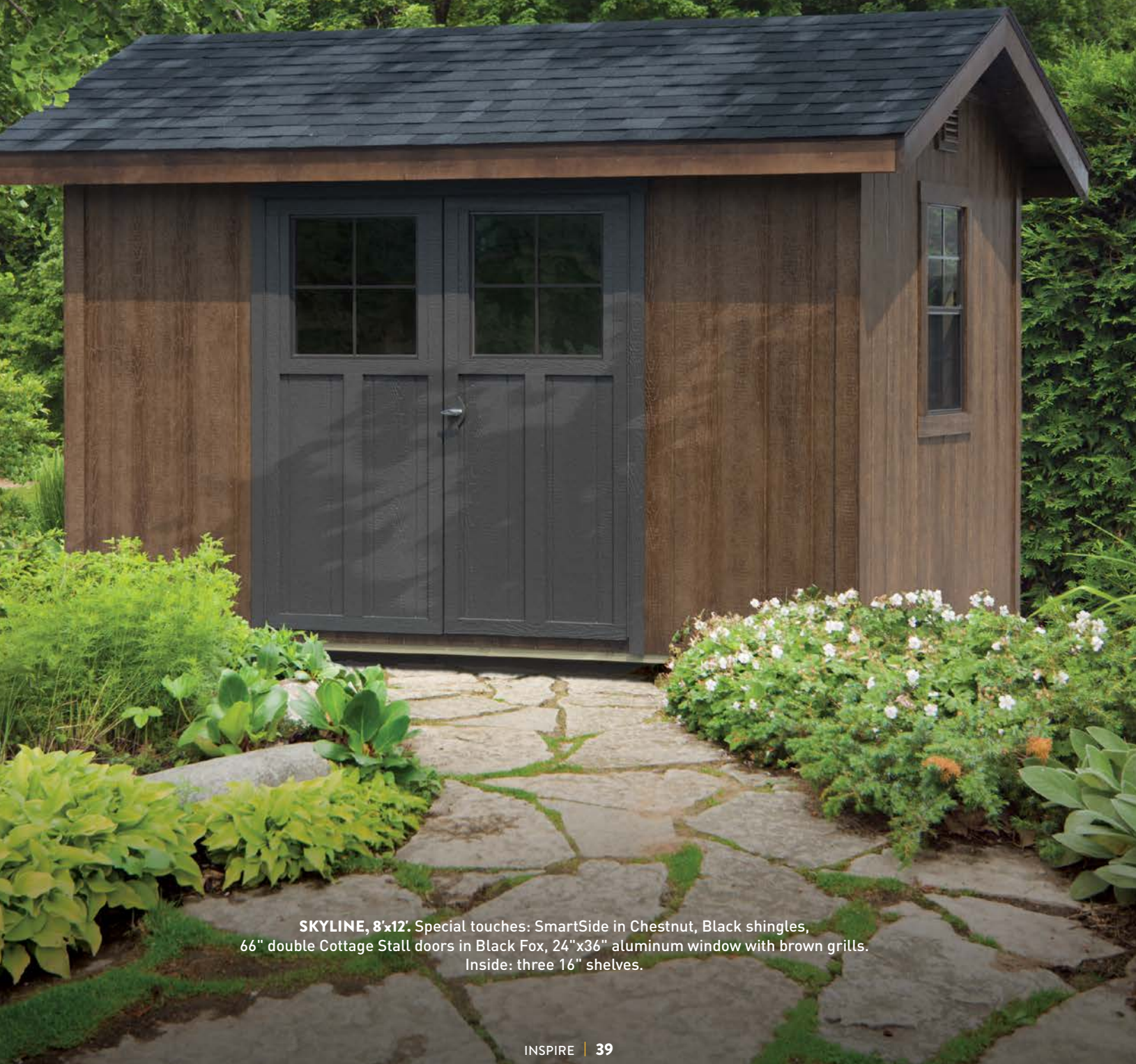


MARCO, 10'x10'. Special touches: five-sided footprint. SmartSide in Khaki with Sandstone trim, Black shingles, 15-light fiberglass doors, 24"x36" aluminum windows, 24" flower boxes, vinyl shutters.



A SHED FOR ANY BACKYARD

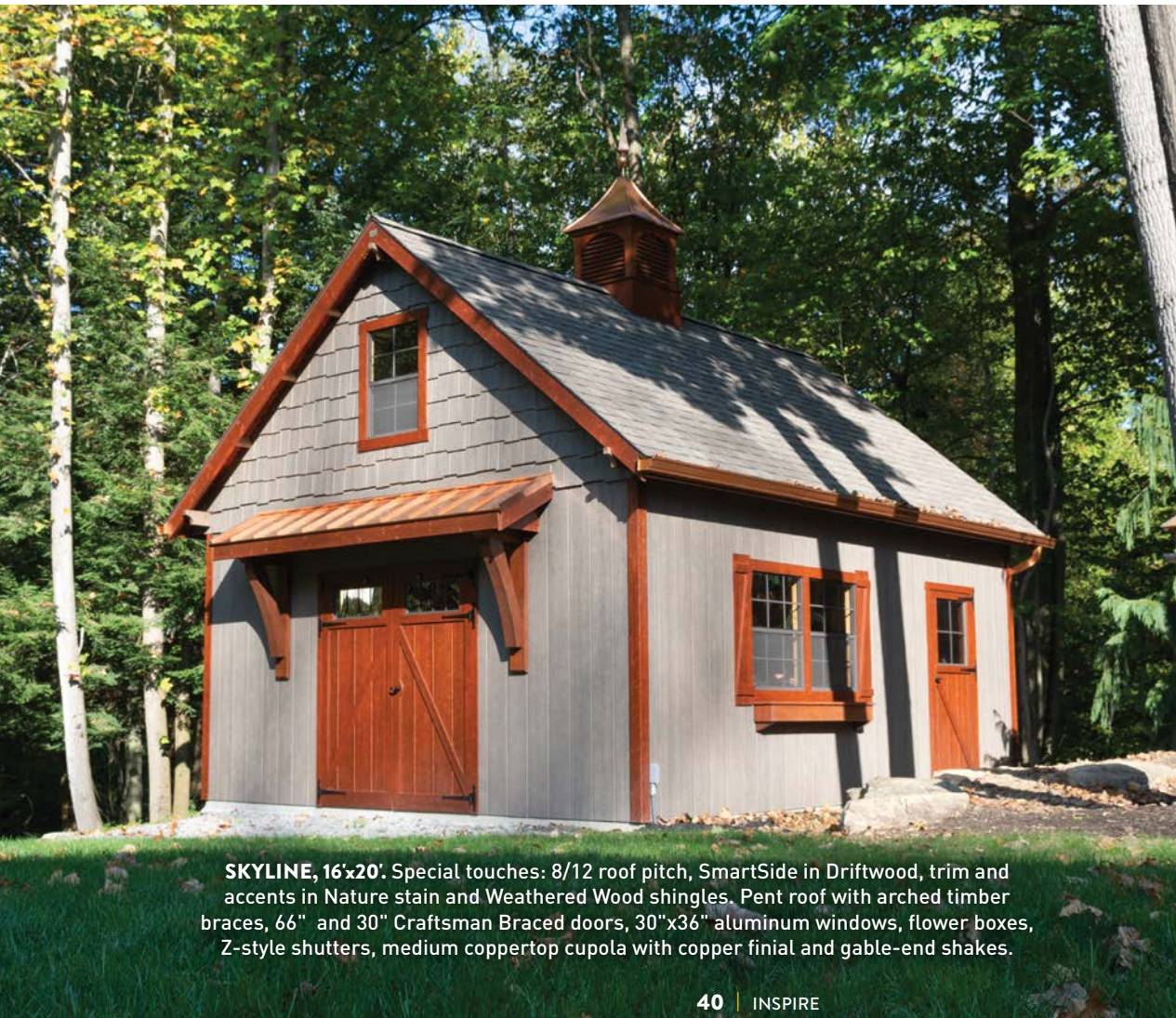
If you've been dreaming of a night under the stars, where the lightning bugs roam, then it might be time to rethink your backyard. The modest size of these sheds hides their big capacity, not to mention their big effect on a backyard.



SKYLINE, 8'x12'. Special touches: SmartSide in Chestnut, Black shingles, 66" double Cottage Stall doors in Black Fox, 24"x36" aluminum window with brown grills. Inside: three 16" shelves.

RUSTIC NEVER LOOKED SO GOOD

A gambrel roof is pure country, and a Scioto porch invites a pair of rocking chairs. Here, it's all done right with hefty 6"x6" porch posts in a woodsy stain and below the porch, joists running as they should — crosswise — to prevent settling at an angle or separation. A properly rustic structure should feel hand-crafted but meet today's design and construction standards.



SKYLINE, 16'x20'. Special touches: 8/12 roof pitch, SmartSide in Driftwood, trim and accents in Nature stain and Weathered Wood shingles. Pent roof with arched timber braces, 66" and 30" Craftsman Braced doors, 30"x36" aluminum windows, flower boxes, Z-style shutters, medium coppertop cupola with copper finial and gable-end shakes.





SCIOTO, 20'x20'. Special touches: SmartSide in Sage with Khaki trim, Tan shingles and Nature stain on a large cupola, doors, windows, and porch deck and posts. Cottage Braced doors, 28"x29" wood windows and 30"x36" aluminum windows with Z-style shutters.



warmth. personality. storage.

44 NOTHING BEATS THE CLASSICS

46 IMAGINATION COMES TO LIFE





SKYLINE, 10'x10'. Special touches: 8/12 roof pitch, SmartSide in Driftwood stain and Turquoise accents, 20"x36" and 28"x29" wood windows and Weathered Wood shingles. Not shown: Cottage Stall door

NOTHING BEATS THE CLASSICS

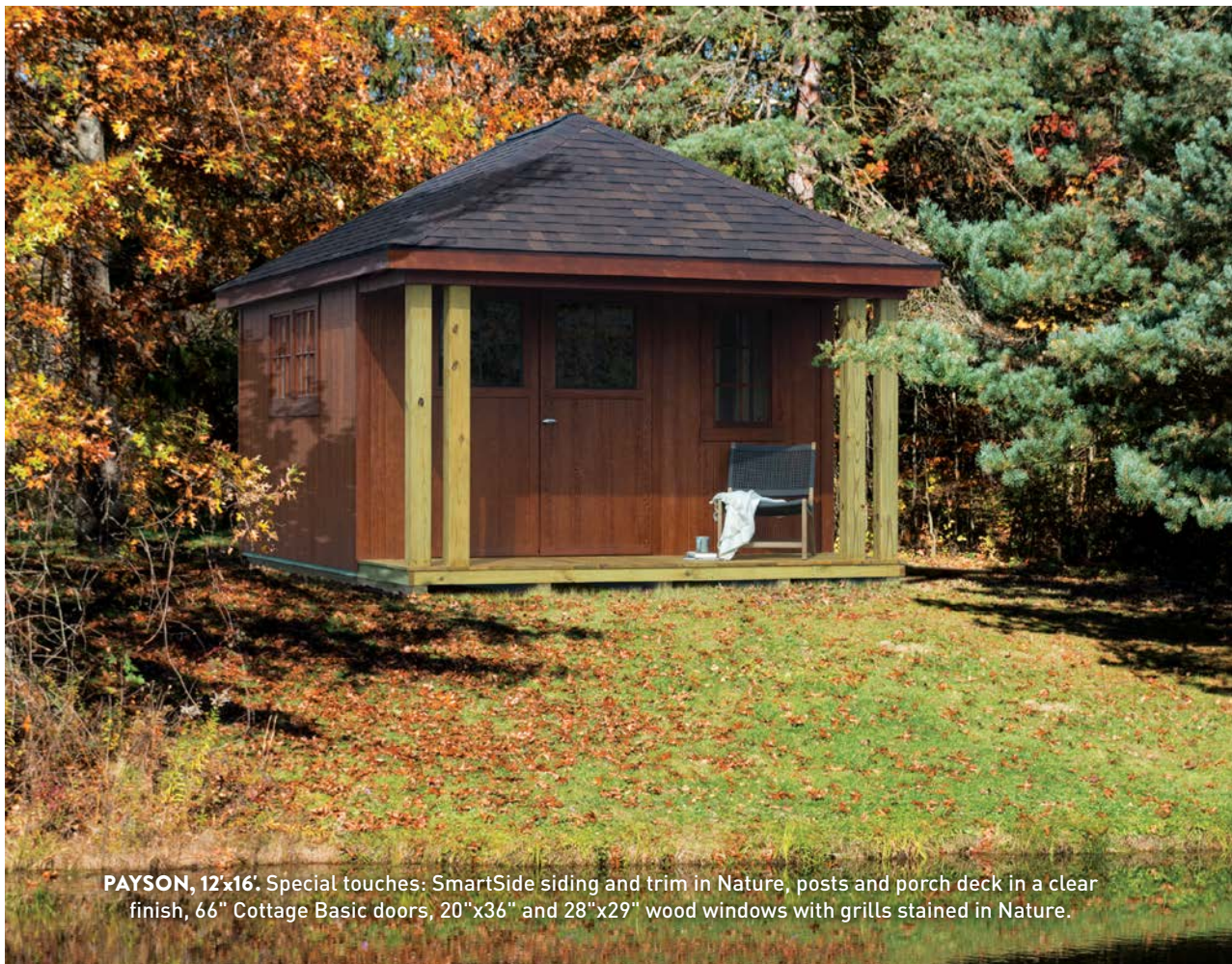
Maybe it's just the way the light hits it on a soft day, but the emerald tones of this color are nothing less than enchanting. Here one hue washes over the entire building, and it's a saltbox at that, a shape that harks back to farmyards and shipyards everywhere, from Ireland and Cornwall to the maritime provinces.



SPRINGFIELD, 10'x14' Special touches: SmartSide in Dark Spruce, Brown shingles, Pushbar double doors with strap hinges, 28"x29" and 20"x36" wood windows with Dark Spruce grills.



HAMPTON, 12'x16'. Special touches: SmartSide in Navy with Soft White trim, Weathered Wood shingles, 66" wide Cottage Basic double doors, Cottage Basic single door, 30"x36" aluminum windows, Z-style shutters and flower boxes.



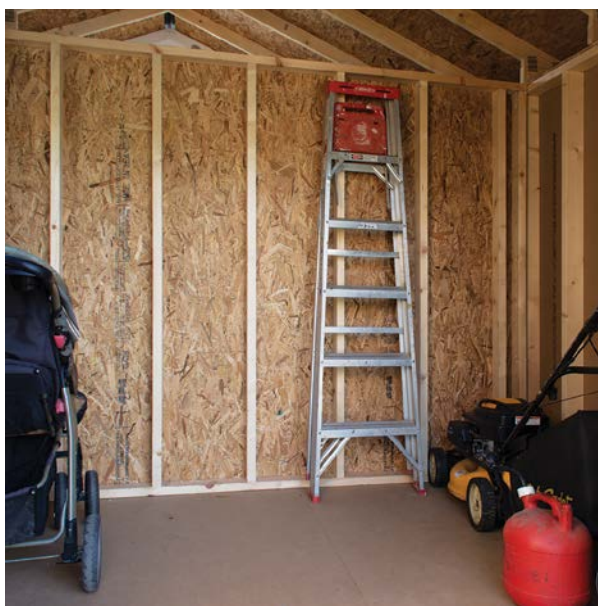
PAYSON, 12'x16'. Special touches: SmartSide siding and trim in Nature, posts and porch deck in a clear finish, 66" Cottage Basic doors, 20"x36" and 28"x29" wood windows with grills stained in Nature.

*Imagination
comes to life.*





What a good idea! Take one new Lexington shed and insert a divider wall – half for garden equipment, half for the kids. Add a coat of whitewash, and tea is served in a space inspired by a movie, *American Girl: Grace Stirs Up Success*, bringing a little bit of Paris to the backyard. The parents say, “This divided shed fits perfectly in our yard and charms everyone who sees it.”



LEXINGTON, 12'x14'. Special touches: Custom ¾ height divider wall, paints and paint scheme. SmartSide, Medium Gray shingles, 33" Cottage Braced door and 54" Braced doors. decorative strap hinges, 30"x36" aluminum window with Crossbar shutters.





a smart budget choice

51 A SHED FOR EVERY BUDGET

53 LIFE IN THE SADDLE

54 STORAGE IN STYLE





Who doesn't love a red door? But it's what's inside that most people remember. This Hartford's advantage is its 7/12 roof pitch. It opens up the interior in a big way, and yes, it looks nice on the outside, too. All the affordability of our New England series and what a look and feel!

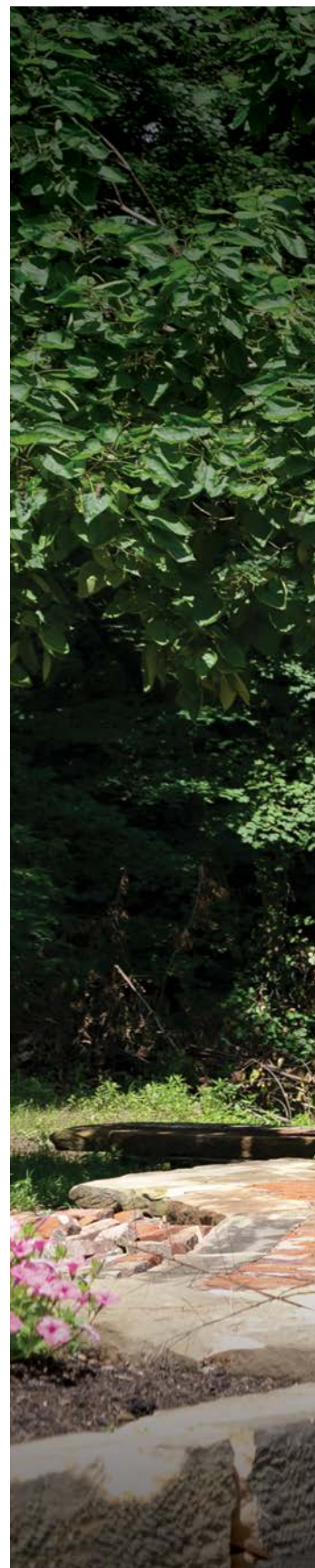
HARTFORD, 12'x24'. Special touches: 7/12 roof pitch, vinyl siding in Clay with Barn Red on Pushbar double doors, Craftsman Stall single door, Z-style shutters and window boxes. Bronze steel roof and 30"x36" aluminum windows.



HARTFORD, 12'x20'. Special touches: 7/12 roof pitch, SmartSide in Charcoal Gray with Soft White trim, Medium Gray shingles, Cottage Stall doors, 30"x36" aluminum windows, Z-style shutters, wood vent, cedar flower boxes, and a large cupola with a sailboat weathervane.



DELAWARE, 8'x10'. Special touches: SmartSide in Willow, Devon Cream trim and Viva Violet accent. Weathered Wood shingles, Cottage Stall doors, 24"x24" aluminum windows, flower box and cupola.



A SHED FOR EVERY BUDGET

You can depend on New England sheds to make a big difference. Affordable but still better than the best of some others. With quality panelized construction, treated skids, joists on edge, SmartSide with reflective interiors, SmartFloors, piano hinges and keyed locks.



HARTFORD, 10'x16'. Special touches: SmartSide in Driftwood with Nature trim and accent. Weathered Wood shingles, 66" Cottage Crossbuck double doors, 24"x36" aluminum windows.



RAISED HENRIETTA CHICKEN COOP, 6'x8'. Special touches: Barn Red siding and trim. Egg-gathering drop-down door, access door and screened ventilation windows. With or without a screened porch. Foxes not welcome!



LIFE IN THE SADDLE

From the handy 8'x12' tack room to the steel roof, this barn is all kinds of country. But of course, it's the red gates taking the look from once-a-upon-a-time rustic to urban cowboy. Do this yourself in almost any shed model. (We recommend Skyline, Mystic and, like this one, Hartford.)

HARTFORD STABLE, 12'x28': Special touches: SmartSide in Cedar stain, steel roof in Galvanized, 28"x29" wood windows with Cherry accent paint, large cupola and horse weathervane. Red gates are 8' wide, and stables include 4' high kickboards, a 6' high divider, and a reinforced perimeter for delivery without a floor. Dutch doors are available.

STORAGE IN STYLE

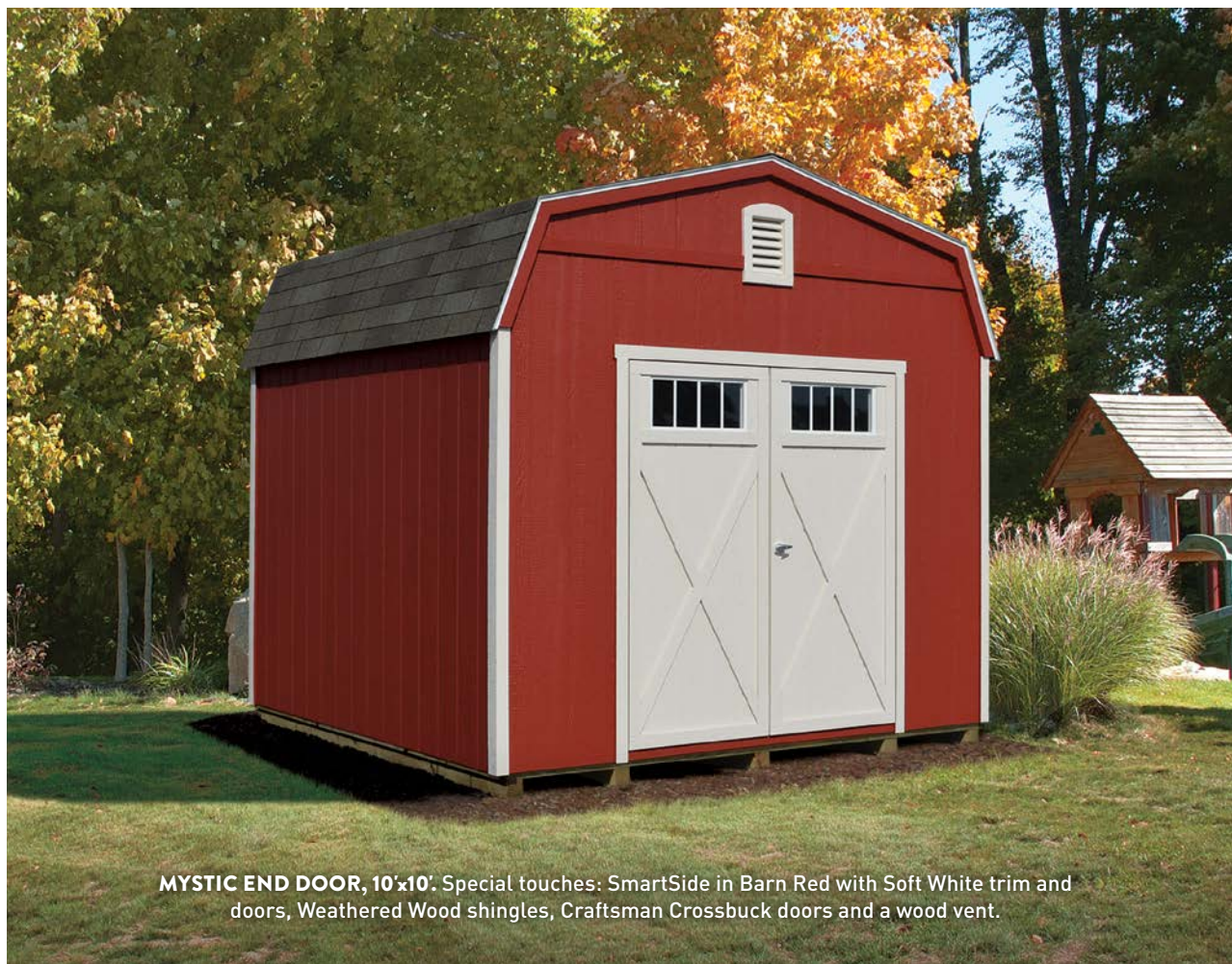


Three affordable New England sheds are for those who love a gambrel roof, which gives you the traditional farmyard look and an excellent way to maximize loft storage. Spec your Mystic with a door on the end or on the side.

MYSTIC SIDE DOOR, 10'x16'. Special touches: SmartSide siding and trim in Cedar stain, Brown shingles, Braced doors and 24"x36" aluminum windows. Inside: extra-depth lofts.



BOSTON, 10'x12'. Special touches: SmartSide in Khaki with Devon Cream trim, Weathered Wood shingles, Crossbuck doors and aluminum threshold.



MYSTIC END DOOR, 10'x10'. Special touches: SmartSide in Barn Red with Soft White trim and doors, Weathered Wood shingles, Craftsman Crossbuck doors and a wood vent.



SOMERSET-INSPIRED GARAGE, 16'x32'. Special touches: SmartSide in Charcoal Gray with Soft White trim, Black shingles, 8' walls, 12/12 roof pitch, 9'x7' garage door, solid-panel fiberglass door, concrete floor by customer, custom windows and custom full-width pent roof.

escape to a perfect garage

59 GARAGES SOLVE SPACE PROBLEMS

61 FLEXIBILITY COMES HOME

DESIGN IT YOURSELF WITH
OUR VIRTUAL GARAGE BUILDER.



SKYLINE INSPIRED GARAGES, 32'x54', AND 16'x28'. A few of many special touches: 12/12 roof pitch with cathedral ceiling. Not shown: a full-height foundation gives this L-shaped garage a full walkout on the far side.



GARAGES SOLVE STORAGE PROBLEMS

Several shed models can be built as garages or you can go custom – we do both and can help you decide what's best and least costly. Three simple changes can turn a shed into a garage: **(1)** 8' side walls, **(2)** garage door (s), **(3)** heavy-duty flooring – double SmartFloor or concrete.

Your Outdoor Specialist is happy to answer questions and help you with the garage you want. Or design it yourself with our virtual Garage Builder.



HARTFORD DOUBLEWIDE GARAGE, 24'x24'. Factory-built and shipped as two halves. Special touches: SmartSide in Ocean Mist with Soft White trim, Medium Gray shingles, 9'x7' garage doors, large cupola. Not shown: Pushbar single door.



FLEXIBILITY COMES HOME



NEWPORT-INSPIRED GARAGE, 20'x24'. Special touches: vinyl siding in Flint, Medium Gray shingles, 24"x36" aluminum windows, vinyl shutters in Black, garage door and fiberglass single door in White. Foundation and rain gutters by owner.

They're Only Young Once

Encourage imagination and independence with a quality-built playhouse of long-lasting wood with child-safe windows, adult doors in the back or side and child-sized lofts.



VICTORIAN, 8'x10'. Special KidzSpace touches: SmartSide in Princess Pink and Soft White with Medium Gray shingles.



CASTLE, 8'x8'. Special KidzSpace touches: SmartSide in Charcoal Gray with Soft White trim and Cherry Red doors, Medium Gray shingles.



ADVENTURE AWAITS

It's only paint! But what a difference it makes, like a shout to children:
"This place is for you!"

CLUBHOUSE, 8'x12' Special KidzSpace touches: SmartSide in Soft White with Pumpkin, Turquoise and Grass with Medium Gray shingles.

Solar. It's time. This custom, off-the-grid solar office near Lake Erie uses maintenance-free solar panels for electricity and thermal collectors for hot water heating. Payback should be achieved in ten years, if not sooner, based on electricity savings, tax credits/rebates, and increased equity value.





LIVE MORE, WORRY LESS

Create a cabin from Brookside, Horizon or Skyline in 10' or 12' widths with several length options, each able to be trucked to a remote location and installed with minimal fuss. Interiors are insulated and finished with SmartSide or 8" pine – a nice touch for a hunting cabin or your own place “to live more deliberately,” now affordable as never before. The interior package also includes 100-amp electric, a switched ceiling light and five outlets. Options include heat and A/C, porch lights and much more.

TINY HOMES, BIG IDEAS

With their small impact on the environment and on your wallet, tiny homes are a big thing. They open the door to the simple life, where you pay less for housing and have more time to enjoy life. Ours are modular for maximum savings and come well equipped with lighting, wallboard, flooring, insulation, cabinets, countertops and plumbing. See many examples online, order floorplans and contact us to get started.





COMPLETE BUYER'S GUIDE

MODEL | **PRODUCT LINE**, page number(s), roof style and other product information (side and/or end entry unless noted).



BOSTON | NEW ENGLAND, p. 55
Gambrel. 4' sidewalls, end entry only.



BROOKSIDE | SIGNATURE, p. 22
Gable, 5/12 pitch. 6'6" sidewalls. 3'x8' porch.
Single & double doors. Dimensions include porch.



HAMPTON | SIGNATURE, p. 45
Hip roof, 8/12 pitch. 6'6" sidewalls.*



DELAWARE | NEW ENGLAND, p. 50
Saltbox. 5'6" & 6'6" sidewalls, side entry only.



ELLIOT | SIGNATURE, p. 4, 5, 38
Shed roof, 6'6" & 8' sidewalls. (Wall height varies slightly for delivery purposes.)



HORIZON | SIGNATURE, pp. 36, 65
Gable, 8/12 pitch. 6'6" sidewalls. 4'D porch, Cathedral ceiling. Dimensions include porch.*



HARTFORD | NEW ENGLAND, pp. 6, 7, 48, 49, 50, 51, 53, 59, 60
Gable, 6'W -14'W: 4/12 or 7/12 pitch. 6'6" sidewalls. 16'W -24'W: 3/12 pitch. 7'2" sidewalls.



FAIRVIEW | SIGNATURE, pp. 10, 11
Gable, 12/12 pitch. 4'D porch: 6'6" sidewalls. 7'D porch: 8' sidewalls. Dimensions include porch.



LEXINGTON | SIGNATURE, pp. 12, 13, 30, 32, 33, 46, 47
Gable, 5/12 pitch. 6'6" sidewalls. 4'D porch. Dimensions include porch.



MYSTIC | NEW ENGLAND, pp. 54, 55
Gambrel. 6'6" sidewalls.



GARDENER | SIGNATURE, p. 20, 21
Saltbox, 4' & 6'6" walls, translucent roof, workbench and 16" shelf.



MARCO | SIGNATURE, pp. 31, 37
5-sided design. 6'6" sidewalls.

*12'W factory-built sheds have a 7/12 pitch.



NEWPORT | SIGNATURE pp. 18, 19, 34, 35, 61

Gable, extended eave, 5/12 - 8/12 pitch.
8' & 10'W: 26" eave, 12' & wider: 36" eave.
8'W - 20'W: 6'6" sidewalls, 24'W: 8' sidewalls.



SKYLINE | SIGNATURE, pp. 2, 16, 17, 23, 24, 25, 26, 27, 28, 37, 39, 40, 42, 43, 58, 60

Gable, 5/12 - 8/12 pitch. 8'W - 20'W: 6'6" sidewalls, 24'W: 8' sidewalls.*



STABLES, p. 52, 53

Stable & tack room. Hartford, Mystic or Skyline.
6' divider (OSB OS), 4' kickboard, 8' opening, reinforced perimeter, no floor.



ONTARIO | SIGNATURE, pp. 14, 15

Gambrel, 6'6" sidewalls, 24'W: 8' sidewalls, 2"x10" top plate.



SOMERSET | SIGNATURE, pp. 29, 56, 57, Back Cover

Gable, 8/12 pitch. 6'6" sidewalls. Cathedral ceiling, 4 or 5 clerestory windows, 2 lofts: 24"D in 12'L, 24"D in 14'L, 36"D in 16'L, 60"D in 20'L, 72"D in 24'L.*



CASTLE | KIDZSPACE, p. 62

Saltbox, 4' & 6'6" sidewalls. Adult door on right. Four 14"x21" windows, loft with ladder. Optional deck comes w/fancy white railings.



PAYSON | SIGNATURE, pp. 38, 45

Hip roof, 8/12 pitch, 4'D porch, twin posts, 6'6" sidewalls. Dimensions include porch.*



SPRINGFIELD | SIGNATURE, p. 44

Saltbox, 6'6" sidewalls, side entry only.



CLUBHOUSE | KIDZSPACE, p. 63

Gable, 10/12 pitch, 4' sidewalls. Adult door in back. Five 14"x21" & one octagon window, loft w/ladder. 8'x4' porch. Dimensions include porch.



SCIOTO | SIGNATURE, p. 41

Gambrel roof. 4'D porch: 6'6" sidewalls. 7'D porch: 8' sidewalls. Dimensions include porch.



RAISED HENRIETTA CHICKEN COOP, p. 52

Saltbox, raised 12" above ground, 6'x8'. Shown with optional screened porch. Two 14"x21" windows, 6 easy-access nesting boxes (3 with screened porch), roosting bar.



VICTORIAN | KIDZSPACE, pp. 62

Gable, 10/12 pitch, 4' sidewalls. Adult door on right. Two 14"x21" windows, loft with ladder. Optional deck comes w/fancy white railings.

HOW TO UPGRADE TO PERFECTION

The Standards, p. 80, list specs by series. Much is included in the base price models shown at left, and the many options and accessories let you upgrade as much or as little as you wish. Built-on-site sheds come as shown, in primer coat, with paint or stain available. Factory-built sheds come with two paints or stains for siding and trim. Additional colors available. Below are two 8'x12' Skylines, shown with and without painted corner boards and upgraded a little or very well indeed.



A LIGHT TOUCH, BUT NICE

The door is widened to 66" and its style upgraded to Cottage Stall. A 30"x36" window is at home here with Crossbar shutters.



MORE IS MORE

More windows! These are 28"x29" wood windows with flower boxes. Corbels decorate the eaves, and a cupola reigns above. Trim paint now extends to corbels, and an accent color is the coup de grace.

CATSKILL SHEDS. WORKHORSE CONSTRUCTION. NO-NONSENSE.

100% Factory-built of the tightest specs and ready for delivery. Exclusively SmartSide, overbuilt for strength and available with a primer coat only. 8 upgrades available, 3 ways to buy fast – cash or credit, rent-to-own or 12 months/no interest. Put extra storage or new work space wherever you've got a job to do.



ABOVE: HARTFORD, 12'x16'

End doors, Black shingles.
Upgrade: 8' walls.

L: BOSTON, 10'x10'

Weathered Wood shingles, no upgrades.

R: HARTFORD, 10'x16'

Side doors, Weathered Wood shingles.
Upgrade: 7/12 roof pitch.



L: MYSTIC, 10'x16'

Side doors, Black shingles.
Upgrade: 24"x36" windows.

R: MYSTIC, 12'x24'

Upgrade: Garage door.

AVAILABLE UPGRADES

1. Increase 54" double door width to 66"
2. Replace double door with insulated garage door
3. Add a 33" single door
4. Increase wall height to 8' (Hartford)
5. Add 24"x36" single-hung windows
6. Add 2' or 4' storage loft
7. Aluminum Threshold
8. Metal Ramps





TEXTURED EXTERIOR



BRIGHT INTERIOR
LP SMARTSIDE

LP SMARTSIDE® PRECISION PANELS

SmartSide is engineered to last longer with cedar grain textured exteriors and bright SilverTech interiors.

8" Pine cove siding available.



6" LP SMARTLAP



WHAT TO LOOK FOR IN LAP SIDING

Our SmartLap siding is better because it is designed with clear drip paths that channel rainwater away. This prevents wicking to the inside, which can cause rot.



STANDARD PAINTS & STAINS

Soft White also available.



SPUN GOLD



SANDSTONE



KHAKI



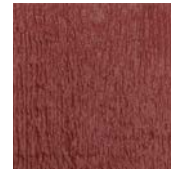
CLAY ROCK



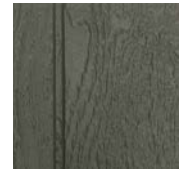
OCEAN MIST



NANTUCKET



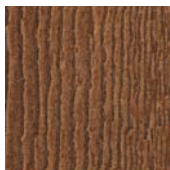
BARN RED



CHARCOAL GRAY



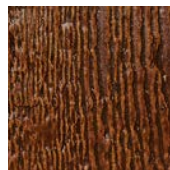
CEDAR STAIN



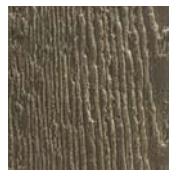
BUTTERNUT STAIN



NATURE STAIN



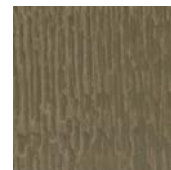
MAHOGANY STAIN



DRIFTWOOD STAIN



CHESTNUT STAIN



SPANISH MOSS
STAIN



WALNUT STAIN

PREMIUM PAINTS

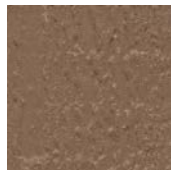
Using a premium paint for siding costs a little more.



DEVON CREAM



LATTE



OAK LEAF



MOODY BLUE



RIVERWAY



STILL WATER



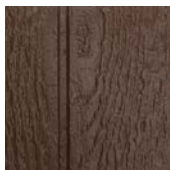
WILLOW



GREEN STONE



SAGE



COFFEE



BLACK FOX

SPLASHES



FACTORY-BUILT SHEDS come with two paints or stains. Choose any standard paint or stain for base areas and any paint or stain for trim. Premium paints and Splashes are available on siding at a modest upcharge. Additional colors can be applied for a minimal set-up charge per color.

BUILT-ON-SITE SHEDS come with a primer coat only. They are available with factory-applied paint or stains; cost varies slightly with paint or stain chosen, and free touch-up paint or stain is included. Please expect to do touch-ups after installation.

PORCH DECKS AND POSTS on factory-built sheds come with a clear finish. Built-on-site are unfinished.

FOR HOMEOWNER APPLICATION, paint or stain is available in the can.

ON VINYL SHEDS, SmartSide doors are painted or stained at no charge.

WHERE FINISHES ARE APPLIED



- Base Areas
- Trim & Accent Areas
- A Siding
- B Corner boards
- C Fascia
- D Door panels
- E Corbels
- G Trim around doors (on shed)
- H Wood vents
- I Window trim
- J Wood shutters
- K Wood flower boxes
- L Cupola
- M Awning (not shown)
- N Wood windows (not shown)

FAVORITE ACCENT AREAS



Doors



Wood window grill & frame

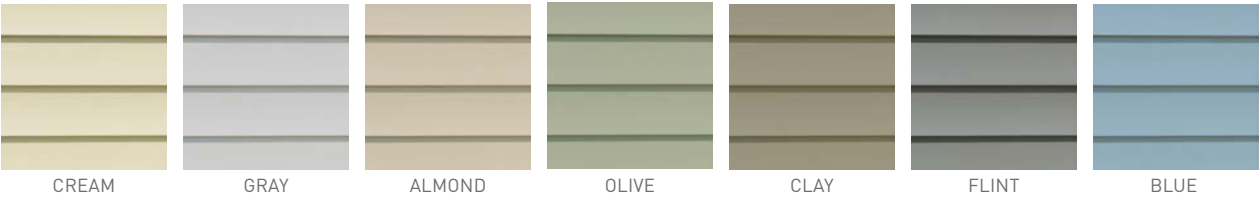


Gable end shakes



Shutters & window boxes

VINYL SIDING 5" straight. White also available.



VINYL SHUTTERS White also available.

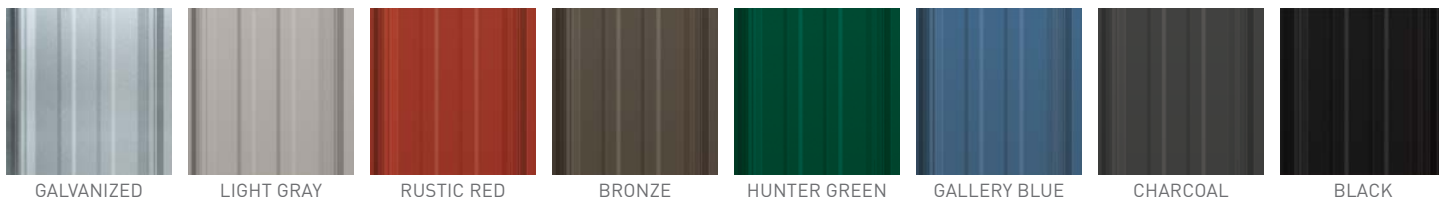


VINYL SHUTTERS

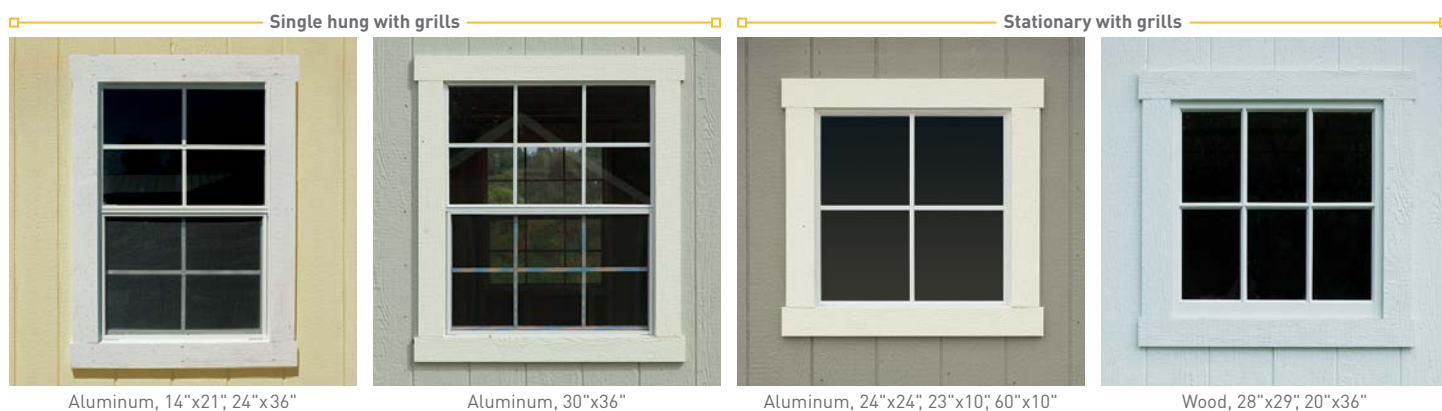
SHINGLES 30-year, dimensional fiberglass. Some shingle colors have limited availability. Please inquire.



STEEL ROOFS 29-gauge steel.



WINDOWS Aluminum windows available in white or dark brown.



Drop Rods for wood doors



Cedar lattice awning for windows or doors



GOOD BONES. WHY A WOOD DOOR IS YOUR TOP SHED CHOICE.

You may wonder why we recommend a wood door for your shed over steel, fiberglass or vinyl. The answer has everything to do with winter. Homes have footers going down 3'-5', below the frost line. Sheds do not. This means sheds go through a freeze/thaw cycle every year, unnoticeable in walls, floor or roof, but affecting doors.

Our wood doors are designed to tolerate the freeze/thaw cycle in ways other materials cannot. Our doors have strong interior frames of 2"x3"s on edge. Their SmartSide and SmartTrim layers give all exposed surfaces SmartGuard protection – structural resistance to warping and chemical resistance to mold, dry rot and termites.

Wood doors take paint and stain beautifully, an advantage with any siding, including vinyl. They are excellent insulators and secure, especially with piano hinges and a keyed lock. Wood resists ordinary wear and tear and is easy to maintain, repair and refinish. The solid feel of wood is most traditional, most desirable and best for resale, which is why every other door is made to look like wood.

Should your door ever stick on a cold winter's day, the best thing to do is nothing! It will likely come back into position when the temps warm up. If not, the solution is simple: shim up a back corner. This little bit of correction can work wonders to re-align a door.

WOOD DOORS 72" h in SmartSide.



PUSHBAR (STANDARD)

STALL

BRACED

CROSSBUCK

ROUNDTOP

ARCHTOP
Double doors only.



COTTAGE STALL

COTTAGE BRACED

COTTAGE CROSSBUCK

CRAFTSMAN PUSHBAR

CRAFTSMAN STALL

CRAFTSMAN BRACED

COTTAGE BASIC ALSO AVAILABLE. SEE PAGE 43, 62, 82.

FIBERGLASS DOORS Not under warranty.



CRAFTSMAN
CROSSBUCK

PRE-HUNG
SOLID PANEL

PRE-HUNG
4-LIGHT

PRE-HUNG
8-LIGHT

PRE-HUNG
9-LIGHT

PRE-HUNG
15-LIGHT

GARAGE DOORS Also available in white. Insulated. Aluminum threshold included.



ALMOND

TAUPE

BROWN

If factory-built:
8'Wx7'H Regular clearance for Mystic, 10' and wider
8'Wx7'H Low clearance for Skyline and Hartford, 12' and wider
8'Wx6'4"H Low clearance for 10' Skyline, 10' and 12' Hartford

If parking a full-size vehicle on a SmartFloor, upgrade to 12" on center floor joists and/or a double SmartFloor.

WEATHERVANES For treated wood cupolas.



Coppertop cedar cupolas

24"x24"
30"x30"
42"x42"



Cupolas, medium or large in unfinished, treated wood

17"x17"
22"x22"



ROOSTER



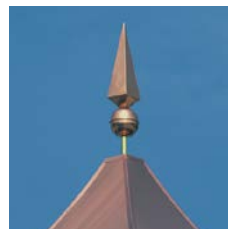
EAGLE



HORSE



SAILBOAT



**COPPERTOP
FINIAL**

Available only on Coppertop cedar cupolas.



Reverse Gable Dormer with Wood Vent
For Skyline in SmartSide or vinyl, includes wood vent. Not open to inside.



LOFT

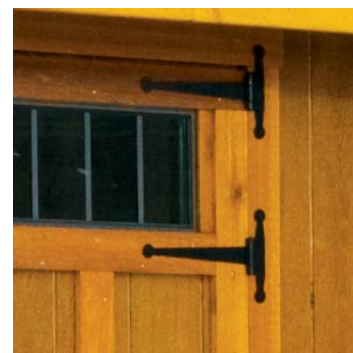
SHELF

WORKBENCH

Loft, shelf, workbench
Lofts and shelves are 7/16" OSB. Lofts come in 24"D sections, installed at top of wall. Shelves are 16"D, installed at 18", 34" or 54". Workbenches are 24"D 3/4" SmartFloor with backsplash and rounded front, installed 35" high, below windows.



Exterior Plant Shelves
Set of two, 16" and 22", 5/4" treated shelves with arched timber braces below.



Strap hinges
Decorative and functional, replaces piano hinge.



Cedar Corbels
A classic decorative touch.



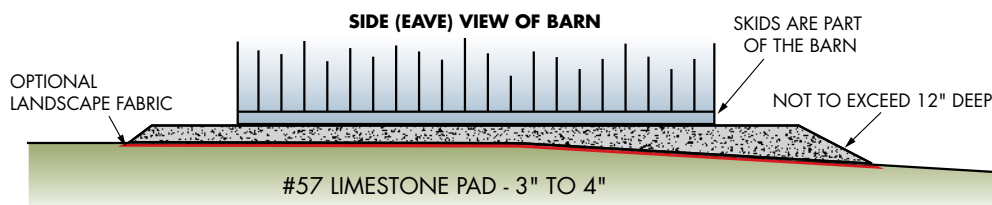
Portable Metal Ramps



Treated Ramps, 54" or 66"Wx48" deep

**HOW TO PREPARE
YOUR SITE**

We recommend a 3"-4" deep limestone foundation pad 24" larger than shed dimensions (12" per side). Buyer is responsible for grading and foundation, building/zoning permits and any needed caulking.



See more installation details online, and talk with your local Outdoor Specialist for site prep options.



Pent Roof with Braces
In three sizes for Skylines and Ontarios, with shingles, 29-gauge exposed fastener steel, 24-gauge standing seam steel or standing seam copper.



Arched Timber Brace
For the extended eaves of Newport.



Small Wood Vent
Replaces metal on New England.



Large Wood Vent



Gable-End Shakes



Plank Flooring. 2"x8" treated tongue and groove. Not covered under warranty.



Hand-Peeled Round Cedar Porch Posts



Radiant Barrier
Reduces solar heat gain significantly and installs in place of regular roof sheathing.



This double SmartFloor with standard 16" OC joists on edge shows no deflection from a semi truck's weight. We don't expect you to park a semi truck on a wood floor, but you could!



JOISTS ON EDGE

Our floor joists are installed on edge, multiplying strength and stability. Treated joists and skids are standard on all models, and SmartFloor is treated with SmartGuard.

SMARTFLOOR. PROVEN STRENGTH.

SmartFloor is engineered for strength, with no natural splits along the grain. A single layer of SmartFloor in a 10'x20' shed has a huge 40,000-pound live load rating, about five times what most housing codes require. For parking a vehicle, we recommend doubling a SmartFloor.

Engineered wood stays stronger longer, resistant to moisture, termites and fungus. Weight is not the best guide to floor strength. Consider – to a termite, a heavy plank floor is just a bigger meal. The validated strength data of engineered wood is far more reliable.



CROSSWISE PORCH JOISTS

In our porch sheds, joists are run properly – crosswise under the building and out under the porch. Lengthwise allows a porch to settle or even separate. Siding goes down to the joists, so rain or melting snow is blocked from the interior.

HOW IT'S BUILT

Almost three decades of building sheds, garages, playhouses, cabins and custom homes has led us to innovative materials and methods, the use of renewable resources, and a quality of construction once only dreamt of.

RENEWABLE RESOURCES. Engineered wood – our siding, floor deck and trim – comes from small, fast-growing trees harvested from SFI-Certified forests. We plant hundreds of trees a year to ensure the future of this precious renewable resource.

PURE DESIGN. Our designs have been refined over time to complement every housing style with modern architectural sensitivity.

QUALITY MATERIALS. We begin with bright lumber – cleaner and straighter skids, studs and trusses than in many houses. Engineered wall panels have the many advantages of textured surfaces, structural integrity, and resistance to mold, mildew and insects.

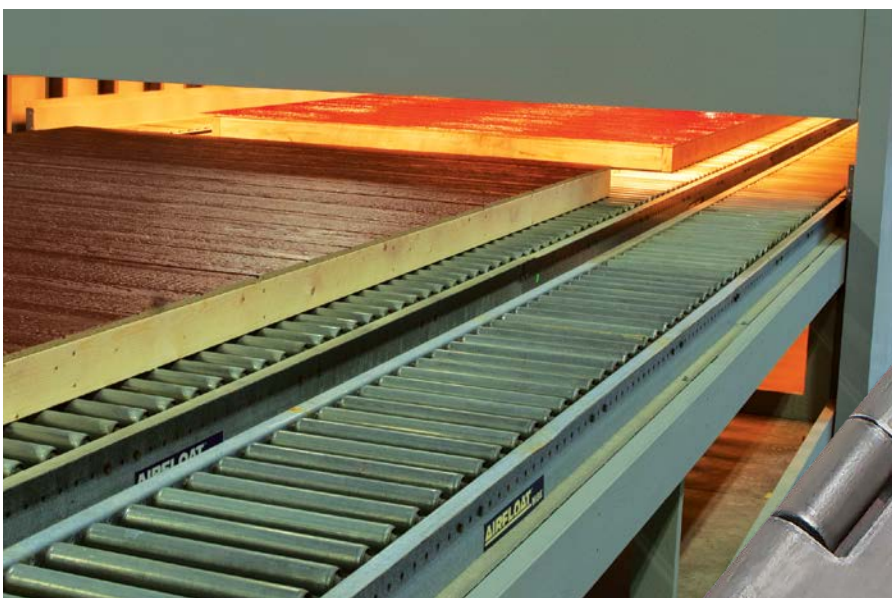
PANELIZATION. Panelizing creates stronger, straighter, tighter walls. It protects raw wood from exposure to weather. Even large structures can be built with surprising speed and minimal disruption to a job site. Panelizing produces a better-quality structure with more efficiency and less waste.

BAKED-ON FINISHES. Paints and stains cure best with seven days of hot, dry weather. Our paint oven replaces nature with a controlled exposure to heat and UV rays, replicating a hot sun and improving the adhesion of the finish.

OSB ROOF SHEATHING. OSB has higher moisture tolerance than plywood, more dimensional stability and none of plywood's soft spots. The idea that plywood is better than OSB is a myth.



Modern building technology like panelization results in structures 100% better than those built, say, thirty years ago. Don't settle for less.



Before our paint oven, the best finish took seven days of hot, dry weather. Now the process is fast, thorough and dependable. It's a big improvement, one to demand when you buy.

WHEN IS 1 STRONGER THAN 2 OR 3?

When 1 six-foot hinge replaces 2 or 3 traditional hinges. Our exclusive six-foot, no-rust aluminum piano hinge gives you serious security. Anyone who thinks he will "just take the hinges off" is in for a surprise. A long hinge helps a door swing smoothly and keep it up over time. Why think so much about a hinge? Because it's a weak point on many sheds. Not ours.



guest interview

What, exactly, is treated, engineered wood?

"For years, untreated wood was a huge problem. When modern chemistry let us treat wood, it revolutionized building. SmartGuard was a big step forward. An advanced, environmentally friendly treatment, it adds dramatically to building life and soundness."

How does LP fit in the industry?

"We pioneered treated and engineered wood and are a global leader in materials engineered for best performance in homes and accessory buildings. No one makes more products specifically for barns and sheds."

Okay, but why not just cut up a tree?

"You could, but our advanced processes use the entire log from fast-growing trees regrown in SFI Certified Forests, managed to optimize timber's splendid ability to renew itself."

What else goes into a great shed?

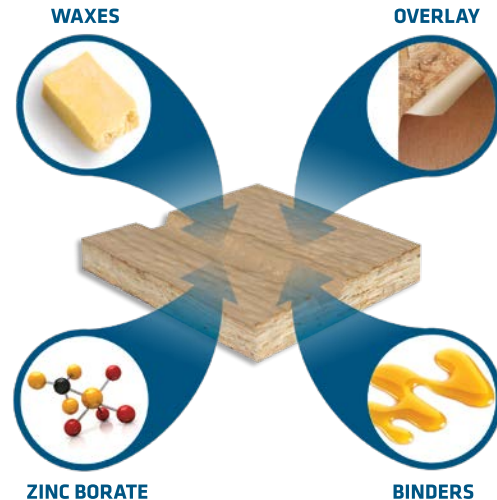
"We couldn't do it without you! The shed industry recognizes your innovative design, construction and paint application. Your customers get a great shed, barn, cabin or tiny home, and we are happy to play a part."



Rachel Hudson
Segment Marketing Associate, Outdoor Building Solutions
LP Corporation

SMARTGUARD & YOUR ENVIRONMENT

1. LP SmartSide is made from wood – a renewable, natural resource.
2. LP relies on small, fast-growing trees that can be replenished more quickly than older, larger trees.
3. LP uses SFI Certified Sourcing systems to ensure that wood comes from well-managed forests.
4. LP uses the entire log. Wood waste is repurposed or used as fuel.
5. LP uses only low-emitting, safe resins without formaldehyde while making SmartSide, SmartTrim and SmartFloor.



SMARTGUARD® LP products use treated wood strand technology with advanced binders, wax and SmartGuard, a proprietary zinc borate, to resist moisture, fungal decay and termites.



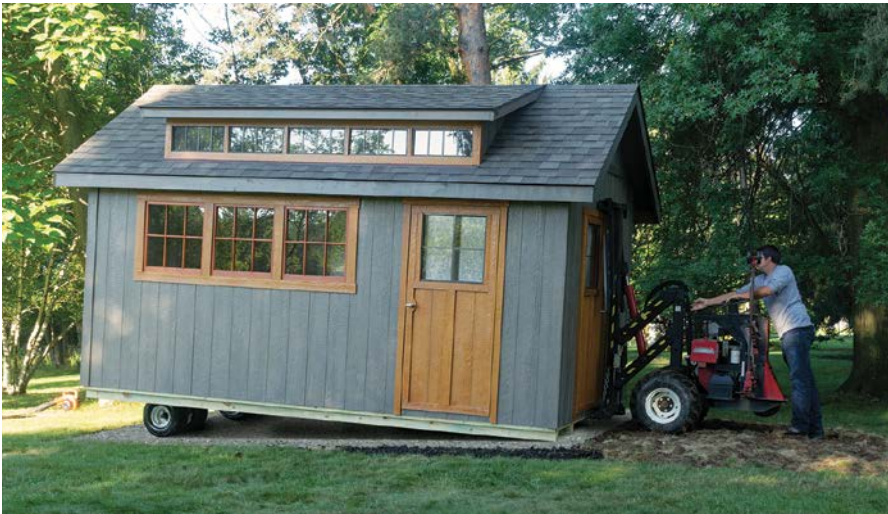
SMARTSIDE has a 5-year, 100% labor and replacement warranty and a 50-year pro-rated, limited warranty on the substrate. LP SmartFloor has a 10-year limited warranty, and that is in addition to our 20-year warranty for Signature.



	New England	Signature Series	KidzSpace/Raised Henrietta
SmartSide® Doors	2"x3" frame, adjustable steel brace, keyed door latch	2"x3" frame, adjustable steel brace, keyed door latch	2"x3" frame, adjustable steel brace, keyed door latch
Single Door	33"x72": 6'W barns	33"x72": Brookside & Gardener	26"x63" & 20"x40": Clubhouse, Victorian 33"x72" & 20"x40": Castle 26"x51" & 12"x20": Raised Henrietta
Double Door	54"x72": 8'W & wider barns	54"x72": 8'W & wider barns (except Gardener)	
Piano hinge	Aluminum, 6' continuous	Aluminum, 6' continuous	Aluminum, 6' continuous
Siding	SmartSide® with SilverTech interior or 5" straight vinyl	SmartSide® with SilverTech interior, 6" SmartLap or 5" straight vinyl	SmartSide® with SilverTech interior
Panel seams	Caulked with sealant	Caulked with sealant	Caulked with sealant
Wall framing	2"x4" wall framing, 24" on center	2"x4" wall framing, 16" on center	2"x4" wall framing, 24" on center
Porches		5/4" treated deck with 6"x6" posts	5/4" treated deck with 4"x4" posts
Vents	Two 8"x16" aluminum vents (one for 6' wide barns)	Continuous ridge vent: Gardener, Hampton, Marco & Payson Six 2" round vents: Elliot Two small wood vents: all other models	Continuous ridge vent: KidzSpace Flip-down door: Raised Henrietta
Pressure-treated skids	4"x4" skids: 6'W (2), 8'W (3), 10'W (5), 12'W (5), 14'W (5), 16'W (8), 20'W (10), 24'W (10)	Fairview, Lexington & Scioto: 4"x4" skids: 12'W (5), 14'W (6), 16'W (6), 18'W (6), 20'W (7), 21'W (7), 23'W (8) All other models: 4"x4" skids: 8'W (3), 10'W (5), 12'W (5), 14'W (5), 16'W (6), 20'W (8), 24'W (9)	4"x4" skids: 2
Floor joists	2"x4" treated joists, on edge, 16" on center, with treated rim	2"x4" treated joists, on edge, 16" on center, with treated rim	2"x4" treated joists, on edge, 16" on center, with treated rim
Flooring	3/4" SmartFloor	3/4" SmartFloor	3/4" SmartFloor
Trusses	24" on center	24" on center	24" on center
Fascia	4"	Gardener: 4" All other models: 6"	4"
Shingles Aluminum drip edge on all roof edges	30-year dimensional fiberglass	30-year dimensional fiberglass	30-year dimensional fiberglass
Roof sheathing	7/16" OSB	7/16" OSB	7/16" OSB
Warranty	5-year, top to bottom	20-year, top to bottom	20-years: KidzSpace No warranty: Raised Henrietta

Vinyl sheds, Signature and New England

SmartSide door painted or stained any one color
Continuous ridge vent (no end vents)
Choice of siding hues (corner trim same as siding)
White or Clay for soffit and fascia



ONE-HOUR INSTALLATION!

You'll be amazed! JDM's small, specialized lift trucks (called "mules") and highly trained drivers make short work of deliveries and keep the process clean and fast.

Our equipment fits tight spaces, but where access is truly impossible, have your shed built on site. Watch it happen at jdmstructures.com/installation



SHED BUILDER BY JDM

JDM's new Shed Builder is an amazing 3D experience that's easy, fun and extremely useful. Not only can you design the shed you want, but every detail is instantly priced for you. The Shed Builder puts you in the driver's seat. Take it for a spin, share the results with friends, discuss your design with your local JDM Outdoor Specialist.

Get started today at JDMshedbuilder.com



SHED BUILDER
BY JDM STRUCTURES

3 EASY-PAY OPTIONS

Got questions? Visit jdmstructures.com/easypayoptions for a Quick Comparison chart.



12-MONTH FINANCING, LOWEST MONTHLY PAYMENTS, FAST AND FLEXIBLE

Work with our quality long-term lender for same day approval and the ability to use the cash for any JDM purchase. Build the shed you want at jdmshedbuilder.com and see the low monthly payments instantly.

Apply online through jdmstructures.com/easypayoptions.



RENT-TO-OWN, NO CREDIT CHECK, USE IT NOW, OWN IT SOON

With Rent-to-Own, a factory-built shed can be installed and used while it's being paid for. Choose a three-year or four-year rental program.

Applying couldn't be easier with same day approval and no credit check!

To get started, pay only one month down and a security deposit. Much smarter than renting a commercial storage unit.

See your monthly payments instantly when you build the shed you want at jdmshedbuilder.com. Get the details here or ask your dealer.



12 MONTHS NO INTEREST, USE IT ANYWHERE

Apply online at our quality 12-Month, No-Interest lender for fast approval and the ability to use the cash anywhere. Use jdmshedbuilder.com to build the shed you want.

Apply online and look for a JDM promo code.

LOVE YOUR BACKYARD

It's your job to keep your family happy, and what's happier than dining al fresco? Make it easy with a three-season outdoor kitchen and a new deck. Somerset is More than a Shed™ with its clean good looks and clerestory windows, and you can find picnic tables and Adirondack chairs at JDM showrooms. Visit us at jdmstructures.com to see much more, experiment with our virtual shed builder and find a dealer.

SOMERSET, 12'x20'. Special touches: SmartSide in Ocean Mist and Devon Cream, Weathered Wood shingles, Cottage Basic doors in Nature, 30" x36" aluminum windows, Crossbar shutters.



JDM STRUCTURES
BARN+SHEDS

jdmstructures.com
jdshedbuilder.com
jdmoutdoors.com